

TealDoc User's Manual



Program Version 6.88
Last Updated: December 18, 2007

Table of Contents

Introduction	1
<i>Contents</i>	<i>1</i>
<i>Installing</i>	<i>2</i>
<i>Terms used in this document.....</i>	<i>3</i>
Chapter 1 – Overview	4
<i>Document List</i>	<i>4</i>
<i>Reading Screen</i>	<i>4</i>
<i>Editing Screen.....</i>	<i>4</i>
Chapter 2 – Document List	5
<i>Navigation.....</i>	<i>5</i>
Device Selection.....	5
Memory Selector.....	5
External Card Selectors.....	5
Current Directory Path.....	5
Parent Folder.....	5
Root Folder.....	5
<i>Opening and Editing Documents</i>	<i>6</i>
Documents.....	6
Images.....	6
<i>Beaming and Sending Documents and Images</i>	<i>6</i>
<i>Moving and Deleting Documents and Images</i>	<i>6</i>
The TealPoint File Manager.....	7
Deleting Files	7
<i>Details (Information)</i>	<i>8</i>
Backup at HotSync.....	8
Private	8
Scanned for bookmarks	8
Format	8
Category.....	8
<i>Supporting Raw Text Files</i>	<i>9</i>
Default Raw Text Types	9
Adding New Raw Text Types	9
Installing Raw Text Files.....	9
<i>Customizing the Document List</i>	<i>11</i>
Chapter 3 – Reading Documents	12
<i>Display Area</i>	<i>12</i>
Scrolling Display	12
Selecting Text.....	12
<i>Back Button</i>	<i>13</i>
<i>Finding Text</i>	<i>13</i>
<i>Font Selection / Options</i>	<i>14</i>
<i>Screen Rotation</i>	<i>15</i>
<i>Toggle ToolBar (Full Screen Mode)</i>	<i>16</i>
<i>Bookmarks and Notes.....</i>	<i>16</i>
Chapter 4 – Advanced Reading Tools	19
<i>Lookup Word.....</i>	<i>19</i>
<i>AutoScroll</i>	<i>19</i>
<i>Printing Support</i>	<i>19</i>
<i>Reading Colors</i>	<i>20</i>
Text.....	20

Hi-text.....	20
Back	20
Hi-back	20
Link.....	20
Hi-link	20
Header.....	20
HRule	20
Drag1, Drag2.....	20
Auto1, Auto2.....	20
Force 16-bit mode on open.....	20
Chapter 5 – Editing Documents.....	21
<i>Creating a New Document</i>	<i>21</i>
<i>Importing from Memos/MemoPad</i>	<i>21</i>
<i>Editing</i>	<i>21</i>
<i>Cursor Movement</i>	<i>22</i>
<i>Search and Replace</i>	<i>22</i>
<i>Fonts</i>	<i>23</i>
<i>Word Lookup.....</i>	<i>23</i>
<i>Exporting to Memos/MemoPad.....</i>	<i>23</i>
<i>Printing</i>	<i>23</i>
<i>Changing Capitalization</i>	<i>24</i>
<i>Word Count.....</i>	<i>24</i>
Chapter 6 – Application Preferences.....	25
Chapter 7 – Document List Preferences.....	26
Chapter 8 – Reading Preferences.....	27
Chapter 9 – Reading Preferences.....	29
Chapter 10 – Editing Preferences.....	30
Chapter 11 – Special Topics	31
<i>Palm 5-Way Control.....</i>	<i>31</i>
<i>Full Screen Modes.....</i>	<i>31</i>
<i>Flash Rom Support.....</i>	<i>31</i>
<i>Upgrading from other browsers</i>	<i>32</i>
<i>Security</i>	<i>32</i>
<i>Oversized Images</i>	<i>32</i>
Chapter 12 – Creating Document Files.....	33
<i>In TealDoc</i>	<i>33</i>
<i>In TealDoc Maker.....</i>	<i>33</i>
<i>Creating a Doc File</i>	<i>34</i>
Step 1) Select a Source Type.....	34
Step 2) Select a Source File	34
Step 3) Select a Palm Name	34
Step 4) Select Advanced Options	35
Step 5) Selection Document Protection Options	35
Step 6) Start Conversion.....	35
<i>Unmaking Doc Files.....</i>	<i>36</i>
<i>Third Party Utilities</i>	<i>36</i>
<i>Converting Microsoft Word Docs</i>	<i>36</i>
<i>Converting HTML Web Files</i>	<i>36</i>
Chapter 13 – Imbedding Graphics/Links/Headers	37
<i>Tag Overview.....</i>	<i>37</i>
<i>Tag Placement</i>	<i>37</i>
Appendix A – TealDoc Tag Reference	38
TEALPAINT	38
HRULE	40
LINK.....	41
HEADER.....	43
BOOKMARK	44
LABEL.....	44
Appendix B – TealPoint File List.....	45

<i>File Lists</i>	45
<i>Navigation</i>	45
<i>Categories</i>	46
<i>Flash Memory</i>	46
Appendix C – TealPoint File Manager	47
<i>Moving/Copying Files</i>	47
Appendix D – TealPoint Button Manager	48
<i>Description</i>	48
<i>Changing Default Mappings</i>	48
<i>Creating New Mappings</i>	48
Appendix E – TealPoint Pen-Free Navigation	49
Appendix F – Products	50
Appendix G – Revision History	52
Appendix H – Contact Info	53
Appendix I – Registering	54
Appendix J – Legal Notice	54

Introduction

Thank you for trying TealDoc. A powerful yet intuitive reader and editor for standard PalmPilot document ("Doc") and text files, TealDoc offers advanced functionality such as:

- editing
- printing
- search and replace
- bookmarks
- automatic scrolling
- imbedded images
- rotate-able display
- antialiased fonts
- smooth scrolling
- full view mode
- tiny font
- external application calling
- document linking.

Contents

This archive contains the following files:

Program files:

TEALDOC.PRC	The TealDoc program file
TDOCMK.EXE	TealDoc document creation/install utility (Windows)
FONTBUCKET.PRC	FontBucket add-on font manager
TPSETUP.EXE	Windows easy-installer program

Content files:

FBFONTS.PDB	Optional set of add-on fonts
DEMODOC.PDB	Sample Palm document demonstrating features
DEMOIM.PDB	Image data for sample document

Document files:

DOCDOC.PDF	This document in Adobe Acrobat (PDF) format
DOCDOC.HTM	This document in HTML format (sans images)
DOCDOC.PRC	This document in TealDoc format
DOCDOC.SRC	Example text source file to the manual doc
REGISTER.HTM	TealPoint Registration form in HTML format
REGISTER.TXT	TealPoint Registration form in text format

Installing

On a Windows PC you can also use quick setup installer by double clicking on the **TPSETUP.EXE** installer program, and following the on screen prompts.

For other systems:

1) Install Program

Use the Palm Install Tool that comes with your organizer to install the program file **TEALDOC.PRC**. The Palm Install Tool can be found as an icon along the left hand side inside the Palm Desktop program on your desktop computer. Instructions on how to use the Palm install tool are in the Palm Handbook or electronic manual that came with your Pilot, PalmPilot, Visor, CLIE, or WorkPad.



2) Install Fonts

Install **FONTBUCKET.PRC** if you wish to support add-on fonts, and **FBFONTS.PDB** for our own selection of fonts we've hand-optimized for use with TealDoc. Visit HandsHigh Software for additional fonts or tools to convert your own fonts from your Mac or PC desktop.

3) Install Documents

For it to be useful, you'll also need to install some document files, available on our web site or most software archive sites like MemoWare.com. Two sample documents come in this archive. First, a portable version of this manual is included as the PalmPilot document **DOCDOC.PRC**. A sample document **DemoDoc** is also provided. It demonstrates the image, link, and advanced capabilities in TealDoc. To view it, install both the document file **DEMODOC.PDB** and the accompanying image file **DEMOIM.PDB**.

Terms used in this document

Hardware Buttons:

The four physical buttons (e.g. date, address, todo, and memo) typically located in a row at the bottom of your handheld

Scroll Up/Down Buttons:

The physical rocker switch at the bottom center of the handheld

Five-way control:

On newer handhelds, a 5-way control replaces the scroll up/down buttons, adding left and right movement and a center select button.

Graffiti:

The special letter-like symbols you write to enter text with your stylus.

Graffiti Entry Area:

The rectangular area at the bottom of the display screen where you can write letters in graffiti.

Silkscreen Buttons:

The four printed circular tap areas (Home, Menu, Calculator, and Find) to the left and right of the graffiti drawing area.

Menus:

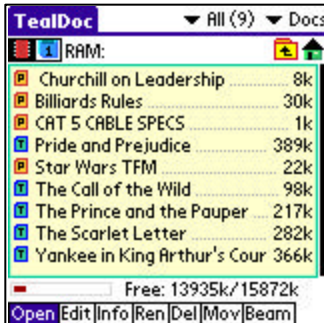
The drop-down menus you get when tapping on the silkscreen menu button, or tap on the title bar (if present) on a device running PalmOS 3.5 or higher.

Chapter 1 – Overview



Start TealDoc by tapping its icon in your application launcher screen. TealDoc is easy to use, and consists of three basic interface screens.

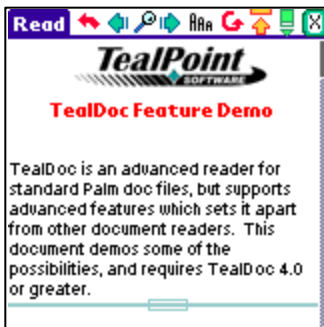
Document List



The first screen, the *Document List*, appears when you first run the program. Shown is a list of all doc files currently installed on the handheld under the active category or in the current location on an external storage card.

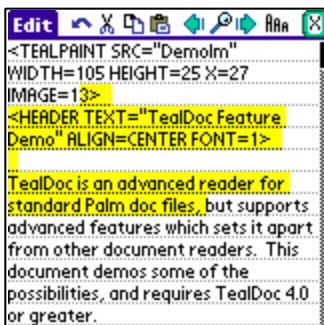
From this screen, you can move or manipulate documents, or open them for viewing or editing.

Reading Screen



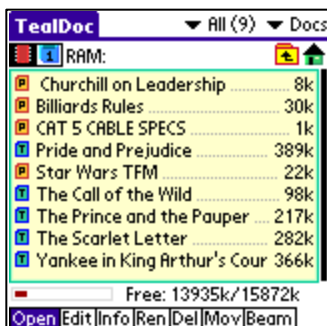
When you open a document, you are brought to the *Reading Screen*, which displays the text with full formatting images, and links. A full selection of features, fonts and tools are available, including display rotation, high resolution fonts, bookmarks, notes, and a full screen mode.

Editing Screen



The *Editing Screen* lets you compose a document or modify the contents of an existing one. Documents are shown in raw text using standard PalmOS text controls, and can be manipulated with cut, copy, and paste commands and even a search and replace option.

Chapter 2 – Document List



Documents are listed on the main TealDoc page in a *TealPoint Standard File List* (See Appendix). TealDoc supports documents in standard PalmPilot “Doc” format, enhanced “TealDoc” format, or raw text files.

Proprietary formats, such as Peanut Press (Protected PalmReader format), iSilo, are not supported, and documents in those formats will not appear in the document list.

Navigation

The document list shows files in the current location in the current category. Tap on the category pick list in the upper right hand corner of the screen to change categories.

The file size in bytes of kilobytes (k) is shown to the right of each document, and non-writable files in ROM (or those with their PalmOS “readonly” property set) are listed with a dot next to their names.

Device Selection

If an external Virtual File System (VFS) –compatible expansion device is detected, a row of icons will appear at the top of the screen to allow you to select a device or navigate folder. From left to right, these are:

Memory Selector

Shaped like a memory chip, the memory selector shows files present in main organizer memory

External Card Selectors

Shaped like a memory card, the external card selectors show files present in external memory cards and devices. Up to four external memory cards, if supported by hardware, may be present.

Current Directory Path

When an external device is selected, the location of the current directory is shown in the center top of the screen. The location is shown as a “path”, or the sequence of folders traversed to reach the current location from the start “root” location of the card.

Parent Folder

Selecting the Parent Folder icon moves the current folder back up one level to the folder which contains the current folder. The starting “root” folder has no parent folder.

Root Folder

Shaped like a house, the Root Folder sets the current folder location to the “root” or “home” directory of the card.

Opening and Editing Documents

Documents

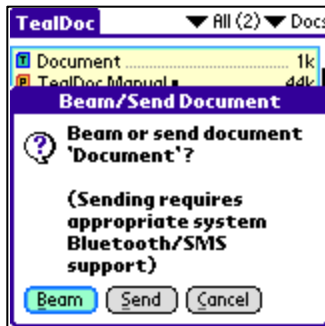
To open a document for reading or editing, simply tap on its name with the “**open**” or “**edit**” pushbutton highlighted.

Images

TealDoc documents can optionally show images from TealPaint-format image databases. While the document list normally shows the documents present on your Palm, you can also use it to display and manage the list of TealPaint -format databases that are installed. To see the list of image databases, change the popup list in the upper right from “**Docs**” to “**Pics**”.

When the viewing mode is set to “Pics”, tapping on a name with “open” or “edit” selected will open the picture in TealPaint if TealPaint is installed, but will have no effect otherwise.

Beaming and Sending Documents and Images

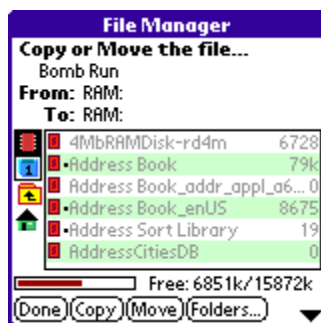


Select the “**send**” pushbutton and tap on the document to beam or send it.

You will be asked to either *send* or *beam* the document. When you *beam* a document, TealDoc uses the infrared port on the handheld to transmit it to another device. When you use the *send* option, TealDoc allows you to use Bluetooth, SMS, or a similar mechanism, depending on hardware the system software on your handheld.

When you beam a document to another Palm, that Palm will also need a document reader to read the file. You can beam an evaluation copy of TealDoc to another Palm by using the **Beam** menu item in the standard PalmOS launcher screen. See your organizer’s documentation for more information on beaming applications.

Moving and Deleting Documents and Images



TealDoc supports the TealPoint standard File Manager for copying or moving files. To open the manager, tap on the **Mov** pushbutton and tap on the name of the file to move or copy.

See the Appendix for more information on using its interface.

The TealPoint File Manager

The TealPoint Standard File Manager allows you to copy or move the pre-selected file from one folder or device to another. The contents of a target location to receive the file appear in the lower half of the screen. Simply select the destination device and folder using the file list and device/navigation icons, and tap on the **Copy** or **Move** buttons to start. Files may be copied between RAM and external storage cards, or between folders on the same storage card. The target location must differ from where the source file already exists. Note that items in the list are not selectable, but are present to indicate contents which may already be present in the target location for the pre-selected file.

Note that operations are limited to what is supported by the installed hardware and system software.

Palm Memory

PalmOS memory does not support folders, and can normally only hold PalmOS-specific resource (.PRC) and database (.PDB) files. When copying desktop-specific files such as .TXT text files, the TealPoint File Manager automatically wraps these in a .PDB file header following the TealPoint "Public" file format so they can be stored in main memory too.

MemPlug

The system software MemPlug expansion Springboard modules does not support the VFS-standard interface for moving of files between Cards and RAM, but third-party add-ons such as the Kopsis Engineering VFS library can add this capability.

Sony CLIE

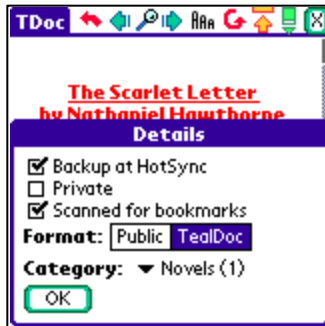
Sony CLIE handhelds running older versions of the PalmOS system software (prior to PalmOS 4.0) do not support copying files to any folders outside the root standard "MSSONY" folder. Subfolders can be freely made and used within the MSSONY folder however.

An additional **Folder** button is present for creating and deleting folders. If the current target is on a device which supports folders, tap on it to either delete the current folder location (if it is empty) or create a new subfolder in the current target location.

Deleting Files

Do not use the Palm Application launcher to delete documents, as the Palm OS groups files together under a single heading, and you can end up deleting all of your documents at once instead of the single one listed. Use the provided interface in the TealDoc Document List instead.

Details (Information)



Document *Details* displays and modifies global properties of a Doc-format document. Open it by selecting the “Info” pushbutton and tapping on a document name. It has no effect on text-format documents, however, as they cannot store the extra information.

Backup at HotSync

Instructs the PalmOS default HotSync conduit to back up a file in main memory when modified

Private

If marked, this file will be hidden or masked on the *Document List* depending on the global Security private record state.

Scanned for bookmarks

When checked, this document has already been scanned for bookmarks and will not automatically be (re)scanned when opened. This choice only appears when the details window is opened from within the *Reading* or *Editing* screens.

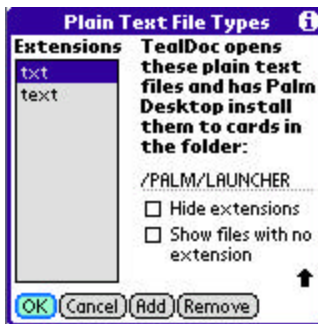
Format

Determines whether Doc format files are flagged to be “owned” by TealDoc or in “public” format. Public format files will be accessible to other applications and may be listed by themselves in the application launcher “delete” screen (depending on OS version), while “TealDoc” format documents will be listed under a TealDoc heading.

Category

Sets the category for the document as seen on the *Document List*.

Supporting Raw Text Files



While TealDoc automatically recognizes standard Doc files and TealDoc files, you can also install raw text files to an external expansion card under OS 4.0 and view them with TealDoc. To do so, you must indicate which files are document files TealDoc should recognize, and tell the Palm HotSync system where to install such files.

Default Raw Text Types

By default, TealDoc recognizes files ending in **.txt** and **.text** as readable document files. To choose or modify other raw text file types to view (such as **.bat**, **.h**, **.c**, **.csv**, etc), first change the current location to a folder on an external card device, then select the **"Text File Types..."** menu item from the TealDoc document list screen.

Two options can be set:

Choose the *Hide Extensions* option here to hide the **".txt"** part of filenames in the *Document List*.

Choose the *Show files with no extension* option to allow files with no extension to be listed and opened as text files **(New in 6.77)**.

Adding New Raw Text Types

Listed will be all the raw file types currently recognized by TealDoc. File types are determined by the file extension of an installed file, the bit after the period (.) on most files. Use the **Add** or **Remove** buttons to add or remove an item from the list. When creating a new type, note that you should enter the file extension without the period symbol. Once you have designated a destination for specified file extensions, HotSync your handheld to transfer these preferences back to the desktop. Once done, you'll be ready to install text files.

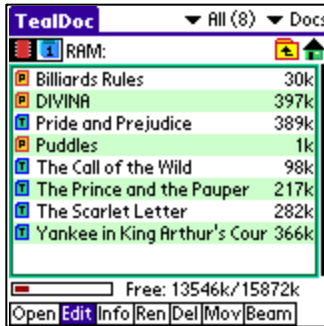
Installing Raw Text Files

Once you've set up an association between TealDoc and a filename extension, HotSync to send this association to the Palm Desktop. The Palm Desktop Installer will then allow you to install files with these extensions directly to your external storage card.

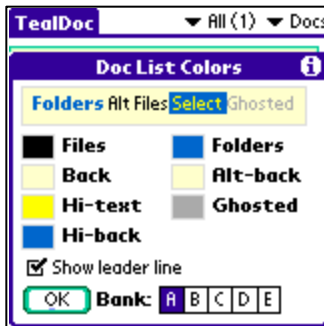
For specific instructions on how to install the raw files onto the expansion card, please check your HotSync software documentation. Currently, the **Palm Install Tool** that comes with PalmOS desktop 4.0 can install files to a device running PalmOS 4.0 or higher. To do so, change the file filter entry on the file selection dialog from **"All Palm Files"** to **"All files"** and select an external expansion card as the target install location. Other handhelds and/or

desktop installations may or may not support non-Palm files or may have different installation procedures.

Customizing the Document List



The document list colors can be customized using the “List Colors” menu item. When used in conjunction with system “Theme Colors” available in the preferences app of some devices, this options allows tailoring of the display appearance for personalization and special lightning conditions (such as nighttime viewing).



In the “Doc List Colors” dialog, colors can be selected for file and folder text, background, alternate background (for every other line), highlighted text and background, and “ghosted” text used for the optional (...) leader next to each name.

Five storage slots, lettered “A” to “E” are available to store different settings for quickly changing between settings.

Chapter 3 – Reading Documents



When you open a document file for reading, you are brought to the *Reading Screen*, which is divided into two regions: a large **display area** at the bottom of the screen, and a **tool panel** and menu bar at the top.

Display Area

Scrolling Display

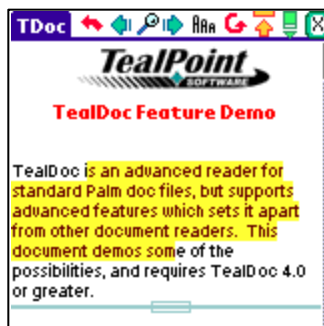
The display area shows a fully-formatted scrolling view of the current document. You can tap in the display area to either scroll the current window or to select text for copying into another program. There is a setting in *Reading Prefs* screen (described later in this document) to change exactly which is done.

When in **scrolling mode**, tap in the top half of the screen to scroll up, the bottom half to scroll down. You can scroll either one line at a time, a quarter-page, half-page, three-fourths of a page, a full page, or a full page with a one-line overlap. This setting too can be found in the *Reading Prefs* menu screen. If you hold down the pen when scrolling, the screen will continue to scroll line-by-line. The closer to the top or bottom of the screen you go, the faster scrolling will occur in that direction.

Alternatively, you can also scroll the display using Page Up/Down scroll buttons or the optional drag bars.

Selecting Text

To select text, tap on text in a document and immediately “drag-highlight” a selection. Move the pen as soon as you contact the screen, as this movement is how TealDoc differentiates a screen tap for scrolling from one intended to select text.



Once the text is selected, you can copy it to the system text clipboard using the **Copy** menu.



Back Button

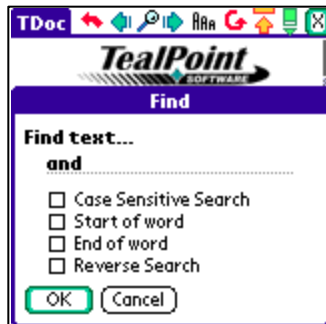
Tap on the back button to return to your last saved position after moving somewhere as the result of a find, clicking on a link, or seeking in the document using the scroll bar.



Finding Text

The set of three buttons to the right of the back button on are shaped like a magnifying glass and two arrows, and are for finding text in a document. Unlike the standard PalmOS find function accessible from the silk-screened “find” button, a find operation done using these buttons only searches the current document. From left to right, they are find-previous, find-new, and find-next. Tap on the find-new button the first time you do a search. Tap on one of the others to find the next occurrence of a previous search either above or below the current location in the document.

Find options include:



- **Case Sensitive** – Text capitalization must match
- **Start of Word** – Text must be the start of a word
- **End of Word** – Text must be the end of a word
- **Reverse Search** - Search going backwards from the current position

If you select both **start-of-word** and **end-of-word**, then the entered text must be an isolated word, not a part of some other word. For instance, if you search for the text “and” normally, you might come up with “demand” or “handy” as possible matches. If you select the **start-of-word** option, however, then “andy” or “Andrew” might match, but not “handy” or “Landrew”. If you choose both **end-of-word** and **end-of-word**, then only the exact word “and” will match.

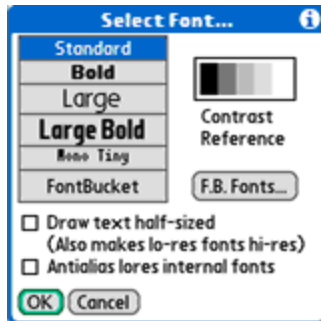
PalmOS global find:

If you want to find text across all your documents, you can use the PalmOS global “Find” function, which is normally accessible by a keyboard combination or silkscreen/status-bar button tap. You’ll need to check the “Support PalmOS Global Find” option in TealDoc preferences to enable global find of documents.

AAA

Font Selection / Options

The font-selection button, containing the three letters 'AAA', can be used to select the current display font or font options.



TealDoc support three basic font types:

- Standard PalmOS system fonts
- An included "Mono Tiny" font for low resolution
- Add-on FontBucket format fonts

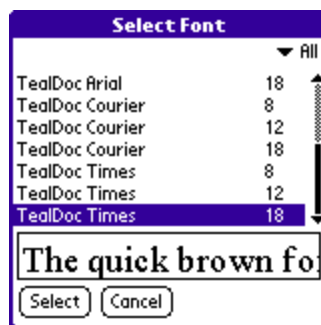
System Fonts

PalmOS provides four standard fonts in ROM on most devices. (Older devices may have only three.) These fonts support antialiasing (below) on low resolution devices, and are available in high resolution on hires devices.

Mono Tiny

The "tiny" font serves two purposes. It is small, allowing for more text on screen than with the standard Palm fonts, and each character is of equal width, like on a typewriter, maintaining formatting of some documents that use spaces to align columns of text. The "Mono Tiny" font is low-resolution and supports antialiasing, and is included for backwards compatibility. For high resolution devices, many equivalent mono-spaced fonts are available as an add-on option. It is not available on Sony CLIE handhelds running PalmOS 3.5, due to limitations in that version of their operating system.

FontBucket



FontBucket, by Hands High Software, is a cross-application standard and system for add-on fonts. FontBucket fonts can be either low-resolution or high-resolution (dual-resolution). While most freely available fonts are in the older low-res format, TealDoc supports both formats, and includes a hand-optimized set of dual-resolution fonts in the zip archive.

To create your own fonts, HandsHigh provides *FontConverter*, an optional font-creation program available for free on their web page or various internet web sites.

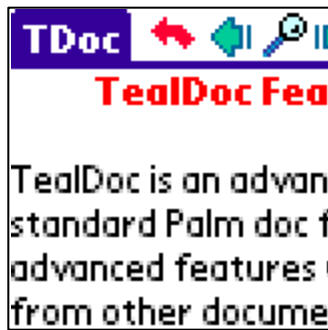
These import bitmap fonts from Windows or Mac desktops for use the FontBucket-compatible programs. It is not available on Sony CLIE handhelds running PalmOS 3.5, due to limitations in that version of their operating system.

Half-sized High-Resolution Text

Since high-resolution fonts always also contain low-resolution counterparts, TealDoc offers a “half-sized” option to both utilize this extra font size on high-resolution devices or treat low-resolution fonts as hires ones. Use this option to:

- render very small text with standard or add-on dual-resolution fonts
- access more font size choices, yielding 4pt, 6pt, 8pt, 9pt, 12pt, and 18pt sizes with the included FontBucket fonts
- treat large low-resolution fonts as smaller high-resolution fonts.

Antialiasing



Antialiasing is available on low-resolution color devices or when running monochrome devices in grayscale mode (via main preference menu). Antialiasing improves text readability by adding gray pixels in the corners of the characters to fill in gaps and smooth sharp “jaggies” in the text, simulating a higher resolution.

TealDoc includes antialiasing information for the standard PalmOS fonts and for the low-resolution “tiny” font, but cannot antialias additional add-on fonts, as they do not contain any additional antialiasing information.



When using antialiasing in grayscale mode, it is important to adjust the display's contrast controls to show an even range of grays. A chart showing a range of gray gradations is shown on the font selection screen to help with this adjustment. Set the device's display contrast so that all five intensity values are even and distinctly visible.

Also, when using language-compatibility hacks like those available for Chinese and Hebrew support, make sure antialiasing is off, as these programs substitute characters in the PalmOS system fonts, causing a garbled-looking display if the now mismatched antialiased pixels are applied to characters which have been changed.



Screen Rotation



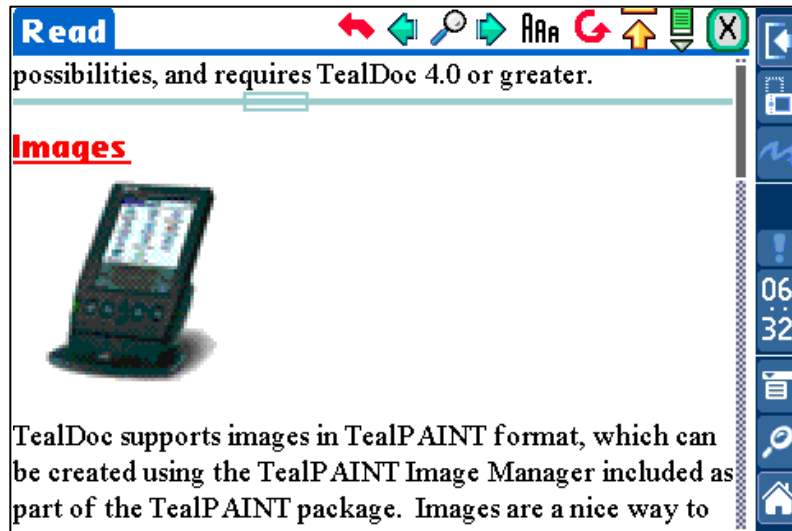
TealDoc supports a sideways-oriented display area. This allows easier access to the Palm's scroll buttons for one-handed operation, and works independently of any rotation feature that may or may not be supported on your handheld.

To rotate the display, tap on the **screen rotation button** or select the **rotate screen** menu item.



Toggle ToolBar (Full Screen Mode)

The “Hide Tools” mode allows you to minimize the tool panel, freeing up the display for more text. Tapping on the full screen mode icon will remove the panel, replacing it with a small triangle icon in the top corner of the display. Tapping on this icon or choosing the “**toggle tool panel**” menu item brings back the tool panel to its former state.



Many newer handhelds, like the Tungsten T3, Samsung PalmOS-Powered Phone and Sony CLIE NR70 also feature their own “full screen” modes which increase the display area by removing the Graffiti writing area. These operate independently from the TealDoc “hidden tool panel” mode. The graffiti area on these devices can typically be toggled manually on and off using the *Toggle Silkscreen* menu item, or by an icon on a status bar for applications the Palm DIA manager, which does not react well to software control of the Graffiti area.



Bookmarks and Notes



You can mark your current location in the file as a bookmark or note (annotated bookmark) by creating a named bookmark using the button in the far upper right corner of the display. This button brings up a list of current bookmarks and notes that work using the familiar category-selection interface. Select a bookmark to immediately move to that location.

Automatic Bookmarks

Automatic bookmarks are imbedded into many document files using markers defined at the end of the file and enclosed in "<>" symbols. For instance, placing "<(BM)>" at the bottom of a document file will cause all other instances of "(BM)" in the document to be found when the document is scanned for bookmarks. The rest of the line of text following the mark is used as the bookmark's name.

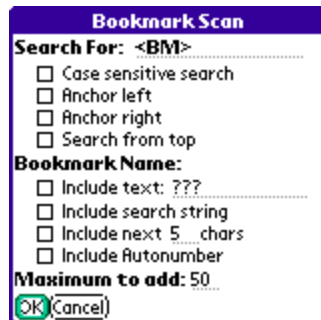
TealDoc also supports more advanced automatic bookmarks, which can be defined with specific text tags that do not appear in the document itself. See the Appendix on TealDoc Tags for more information on creating TealDoc-format automatic bookmarks.

Scanning for Bookmarks

By default, when a document file is first opened, it is automatically scanned for both such marks. A bookmark is automatically created for each instance found. As this will cause a slight delay when you open a new document for the first time, you may wish to turn this feature off. You can do so using the Preferences Menu, and perform the scan later using the **Scan for Bookmarks** menu item.

Custom Bookmark Scan

To manually scan for bookmarks, choose the **Custom Scan** option. Enter a search string and options, and when you click OK, TealDoc will automatically scan the file for the string entered and place a bookmark at each occurrence.

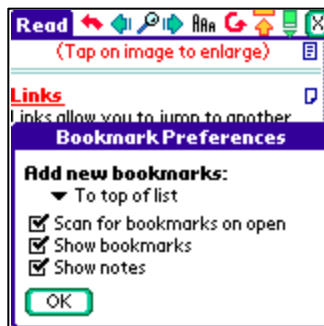


The bookmark's name will be constructed from the following of optional elements:

- Some specified text
- The text to search-for
- A specified count of characters found after the search string.
- An auto-incremented number starting at 1

A maximum of 50 bookmarks (by default) will be added in this manner each time to keep the program from looping endlessly if an unintended search string is selected (such as a space).

Bookmark Prefs



Bookmark preferences, available from a drop down menu, sets various options for bookmarks, including whether they appear as clickable icon in the display area, and where new bookmarks are added in the bookmark list.

Editing Bookmarks and Notes



The **Edit Bookmarks** menu item brings up the *Edit Bookmarks* window, which allows you to move, rename, edit, and delete bookmarks and notes attached to the current document.

The *Edit Text* button can be used to rename a bookmark or note or modify the contents of a note, while the *Move Loc* button will change the location of a bookmark on the list to the current location in the document.

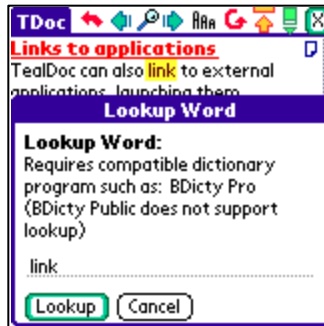
Sorting Bookmarks

The **Sort Bookmarks** menu item allows you to sort the current list of bookmarks either by alphabetical order, or by the order in which they appear in the document.

Chapter 4 – Advanced Reading Tools

Additional Reading Screen options are available from the drop down menu, including:

Lookup Word



The word lookup option passes selected text to a dictionary program. Text can be selected by dragging it on screen or using the optional “select word” tap option on the Reading screen. Currently, TealDoc supports BDicty Pro by Beiks.

Note: BDicty Public (the free dictionary application) will pop up in response to TealDoc but it does not support word lookup, so you'll have to retype the word you're looking up if you haven't paid for the full version.

AutoScroll



TealDoc provides an **AutoScroll** feature to allow you to automatically advance through a file in a hands-off manner, similar to a teleprompter. When autoscroll is on, the file automatically steps forward or backwards through the file line-by-line.

When activated via drop down menu, the autoscroll controls appear at the bottom of the screen, consisting of a stop button and a speed-control bar.

Move the speed bar to the right to increase the speed, or move it to the left to slow or reverse the autoscrolling. A green bar indicates a positive forward speed, while a red bar indicates a backwards-scrolling direction.

Printing Support

TealDoc supports printing of documents via IR or cable through our printing program TealPrint. Both these options are available through drop down menus. Only the text is printed; special tags and images are ignored. TealPrint supports various graphics and text printers, and can interface directly to supported printers through IrDA or serial interface, or any Windows-based printer using exclusive “HotSync Printing”. for more information on TealPrint, visit www.tealpoint.com/softprnt.htm

Reading Colors



TealDoc supports customizing of colors used on the Reading Screen. To change colors, select “Reading Colors” from the drop down menu.

A preview of how the colors will appear is shown at the top of the page. At the bottom, five color “slots” labeled “A” through “E” allow saving of up to 5 different banks of color settings.

The following color options are supported. To change a color, tap on the box next to each item:

Text

Color of standard document text

Hi-text

Color of text when highlighted by dragging the cursor

Back

Color of the background page

Hi-back

Color of the background of highlighted text

Link

Color of hypertext links and buttons in documents

Hi-link

Color of highlighted box drawn when a link is tapped

Header

Color of TealDoc tag-formatted header text

HRule

Color of TealDoc dividing ruled lines and boxes

Drag1, Drag2

Colors used to draw drag bars and the full screen toggle icon

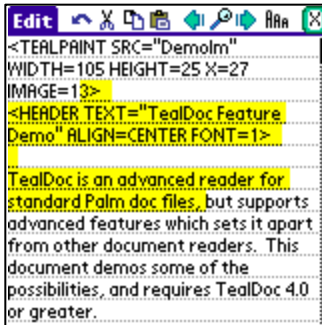
Auto1, Auto2

Colors used to draw the autoscroll control bar

Force 16-bit mode on open

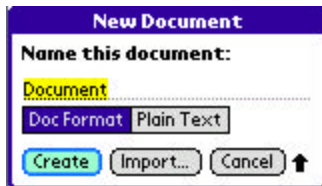
When this option is set, the screen display is changed to 16-bit mode when a new document is opened. This improves the image quality of documents with 16-bit photographs.

Chapter 5 – Editing Documents



With a similar layout to the *Reading Screen*, the *Editing Screen* shows a document in the lower half of the screen with a toolbar at the top.

Creating a New Document



To create a new document, chose *New Document* from the *Documents* menu on the *Document List Screen*. You can create a document in either text for Palm “Doc” format. Select *Create* to create and open a new blank document, or select *Import* to import a memo from the *Memos/MemoPad* application, below.

Importing from Memos/MemoPad



To import a memo into a new document, select the *Import* button in the *New Document* popup. Then choose from a list of existing memos and select “OK”.

(New in 6.77)

Editing

Documents are shown in unformatted raw text, with all TealDoc tags and markers plainly visible. Editing is done in a standard PalmOS text field, allowing for normal undo, cut copy, and paste operations via drop down menu or the provided toolbar icons. It also supports third party add-on popup editing tools that require standard text fields.

When you edit a long document, text is paged in and out of the PalmOS text field whenever you scroll the screen. This is to bypass limitations in text field controls, which cannot contain large blocks of text. Thus, the “select all” command only selects all the text in the field, not in the entire document. Also, it is possible that while editing, if you type or delete a very large amount of text in one sitting that you may need to scroll the screen to refresh its contents

When you scroll the screen, note that the text field contents are refreshed, so system undo operations will not undo past the last screen scroll.

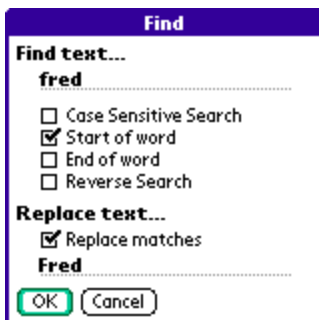
Cursor Movement

Default cursor movement varies from device to device. Some handhelds map the 5-way navigation buttons to cursor movement at a system level, some only handle horizontal movement, while others do no automatic cursor movement whatsoever.

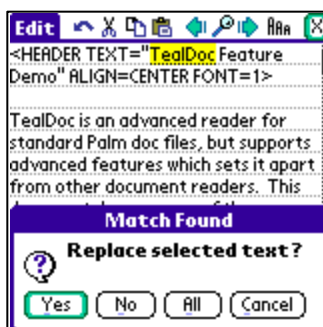


By default, TealDoc maps the vertical scrolling buttons to page up/down and lets horizontal 5-way arrows (if present) map to their system default actions. To change or override these mappings, change them using the *Buttons* menu.

Search and Replace

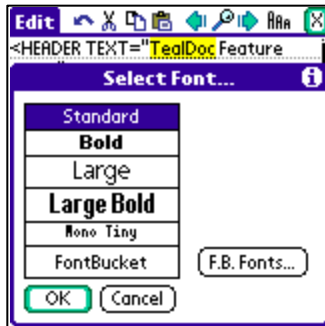


The *Editing Screen* supports a Find operation very similar to the one on the *Reading Screen*, but now it also contains an option to replace any found text with new text you choose.



When using search-and-replace, each match is shown as TealDoc finds it, and you are given a choice to confirm the text replacement.

Fonts

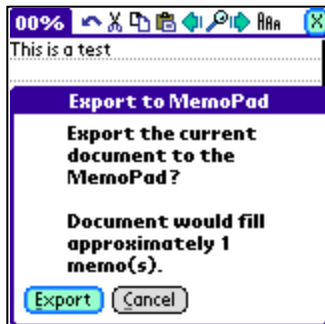


Again like the *Reading Screen*, fonts on the *Editing Screen* can be selected from standard for FontBucket fonts. However, due to PalmOS limitations and compatibility considerations, the fonts cannot be drawn in tiny size or with antialiasing.

Word Lookup

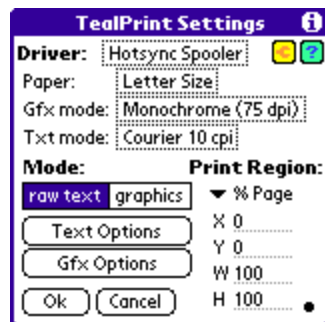
Word lookup support in the Editing Screen is identical to the same function in the Reading Screen.

Exporting to Memos/MemoPad



Use the “Export to MemoPad” menu to export the contents of a document to one or more MemoPad memos. Memos on older devices have a size limit of 4000 bytes, so the document may be split across multiple memos if it is larger than 4000 bytes.

Printing



Printing support in the Editing Screen is identical to the same function in the Reading Screen, and is accessible via the **Print Full Document** and **Print Screen Text** menus. You must install the separate program **TealPrint** in order to print documents.

Changing Capitalization

TealDoc supports handy tools to change the capitalization of a selected block of text:

Caps ALL LETTERS

Capitalizes all selected text

Caps Start Of All Words

Capitalizes only the first letter of each word, converting other letters to lower case

Caps Start of Big Words

Capitalizes the first letter of "important" words, leaving words like "the", "of", "for" and other English words not commonly capitalized in Titles in lower case.

Caps Start of sentences

Capitalizes the first letter after a period and space.

Caps no letters

Converts all selected text to lower case

Word Count

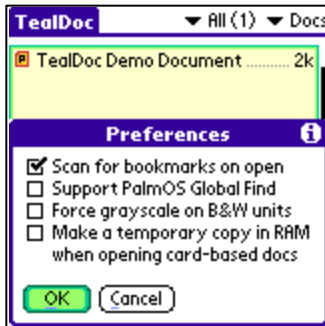


Use the **Word Count** menu to summarize the word, sentence, and character count (both counting and not counting spaces) of the current document.

Words are counted as consecutive sequences of characters delimited by spaces, while sentences are sequences of characters followed by a period (.), question mark (?), or exclamation point (!) and one or more spaces.

Word counts are a good way to gauge the length of your document, be a little higher than the actual count if the document contains many abbreviations, which can sometimes be mis-counted as sentence breaks.

Chapter 6 – Application Preferences

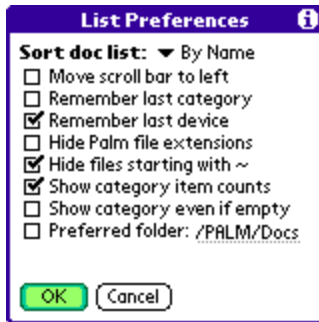


TealDoc supports a number of options under the **General Prefs** menu item, on the Document List screen.

- **Scan for bookmarks on open**
When this option is checked, TealDoc scans a new document for bookmark tags and markers when it is first opened, adding any bookmarks it found to the document's bookmark list. If not checked, the document is just opened with no bookmarks, but these can be added manually later using the **Scan for bookmarks** menu.
- **Support PalmOS Global Find**
When checked, the system global find command, accessible from the silkscreen **find** button, also searches TealDoc documents in main memory. Turning on this option can significantly slow down a Global Find if you have many or large documents, however, as every document installed gets scanned.
- **Force Grayscale**
When checked, TealDoc opens up in 4 or 16-shade grayscale mode on a monochrome device, improving graphics and allowing antialiasing support.

A PalmPilot with the DragonBall EZ processor or better (Palm IIIx, Palm V, Palm Vx, Visor) and OS 3.3 or higher is required for 16-shade mode. When in grayscale mode, color images in TealDoc documents are remapped to grayscale. This option has no effect on a color device.
- **Make temporary copy in RAM when opening card-based docs**
Normally, documents on VFS cards are opened directly off the card, minimizing their footprint for better memory efficiency. Doc files are not designed to be editable when residing outside of memory, however, so creating and modifying bookmarks can be quite slow when done directly off VFS cards. When this option is chosen, however, documents on VFS cards are temporarily copied into main memory when they are opened, and then copied back to the cards when the document is closed. This allows faster access to the file during normal use, but requires sufficient free memory to comfortably hold any documents to be viewed. This option can also be used to speed display of raw text files, though bookmarks are still not supported by them.

Chapter 7 – Document List Preferences



TealDoc supports a number of options under the **List Prefs** menu item, on the Document List screen.

- **Sort Document list**

The document selection list can be sorted alphabetically by name, by file size, or by modification date. The 'unsorted' option simply lists the files in their order in memory, which is useful for faster text display when many documents are installed.

NOTE: "Doc" format files store the current page position in the header of the file, so their modification date gets updated whenever you open the document.

- **Move Scroll Bar to Left**

Moves the scroll bar for the document list to the left side of the screen

- **Remember last category**

Causes the current document category to be restored when TealDoc is restarted.

- **Remember last device**

Causes the current device (card or memory) to be restored when TealDoc is restarted.

- **Hide Palm file extensions on card**

When selected, file extensions (.prc, .pdb) for Palm-format files on external cards are hidden.

- **Hide files starting with ~**

When selected, files beginning with a tilde (~) are not shown. This feature is useful for hiding selected documents in a set of documents designed to be linked together.

- **Show category item counts**

If checked, the number of items in each category (if nonzero) appears next to each category name in the category pick list.

- **Show category even if empty**

If selected, all categories, even empty ones, are included in the category pick list. The only categories that are not shown are ones with a blank name

- **Preferred Folder**

Use this option to select a preferred folder to look for doc files.

If selected, TealDoc will look for the indicated folder path on all mounted external cards. If found, the initial current directory associated that device will be set to the requested folder so when you switch to that card, it will open first in the requested folder.

Chapter 8 – Reading Preferences



Preference items affecting TealDoc functionality while reading a document can be found on the **Reading Prefs** screen, available as a menu item on the Reading Screen.

- **Scroll Bar**

TealDoc supports an optional document scroll bar that can appear on the left, right, or bottom edge of the viewable document window. Placing the scroll bar on the bottom of the document allows the page to use the full width of the display for text.

- **Tab Width**

By default, TealDoc follows the standard used by PalmOS text fields, which sets tab stops every 20 lo-res pixels across a page. Using this option, the tab interval can be changed to another value. This can be useful in matching screen spacing to a tab-formatted document.

For instance, when viewing program source code written for 3-character tab stops, using the mono-tiny font (which has a fixed 4-pixel character width) and 12-pixel tabs will replicate the original formatting.

- **Smooth Scrolling**

TealDoc can optional smoothly animate the screen image between page transitions. This helps keep the reader from losing his or her place when scrolling from page to page, especially when autoscroll is being used.

Smooth scrolling supports two modes. In **'partial'** mode, the on-screen is animated smoothly off the page before filling in the newly-revealed part of the page. In **'full'** mode, the new text is pre-rendered before the scrolling begins and is animated on screen the same time the old text is slid off in one continuous motion. This is visually more appealing, but will add a momentary delay to the scroll operation before scrolling begins.

- **Right Justify**

Select this option to display text as right-justified. This option is present for languages that read right-to-left such as Hebrew and is usually useful only when used in conjunction with a third-party language support program which adds special characters to the current font.

If you select the "Detect Hebrew" option, the text is justified on a line-by-line basis, depending on whether that line has any characters in the range (above ASCII 224) where Hebrew characters are inserted in at least one Hebrew support application.

- **Scroll Buttons**

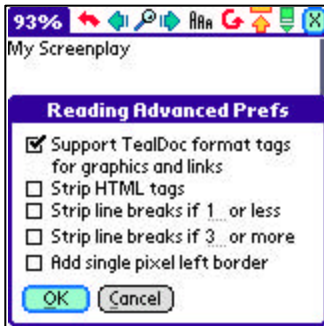
This setting changes how the up and down scroll buttons on the PalmPilot scroll a document being viewed by line, ¼ Page, ½ Page, ¾ Page, full page, or full page with a 1-line overlap.

- **Screen Taps**

This setting changes how tapping on the screen scrolls a document being viewed. It can scroll by line, $\frac{1}{4}$ Page, $\frac{1}{2}$ Page, $\frac{3}{4}$ Page, a full page, a full page with a 1-line overlap, or do nothing at all.

Two last options, “select word” and “lookup word” selects the current word being tapped. A tap-and-hold on the screen always starts an interactive scroll operation, however, unless the pen is moved initially to select text. The “lookup word” option then also passes the word to a supported dictionary program, such as *BDicty Pro*.

Chapter 9 – Reading Preferences



Open the **Reading Advanced Prefs** screen for special options controlling how document files are decoded and displayed. **(New in 6.77).**

- **Support TealDoc Format Tags**

When this option is checked, TealDoc recognizes TealDoc's enhanced graphics, formatting, and link tags. When unchecked, TealDoc functions as a basic text-only browser, letting you see any embedded TealDoc-format tags and markers in the text.

- **Strip HTML Tags**

When this option is checked, TealDoc removes HTML tags from documents and text files and only shows the remaining text. This can be used to view the raw data from unconverted HTML files.

This option does have a few limitations. First, large tags longer than 200 or so characters (such as long comment sections) may still appear in the document. Furthermore, speed or formatting may be affected in documents with a very large number of tags due to the great amount of data which much be processed to render a single page.

- **Strip line breaks if XX or less**

When this option is checked, TealDoc removes contiguous line breaks from a document if their number falls below a required minimum. For instance, if set to "1", a text document with hard line break characters will be reformatted within paragraphs to fit the Palm screen, but double-line-breaks separating paragraphs will be left alone.

- **Strip line breaks if XX or more**

When this option is checked, TealDoc removes contiguous line breaks from a document when they exceed a specified number. For instance, when set to three, line breaks are capped at a maximum of two (3 minus 1) in a row, which means that two blank lines (which require 3 line break characters) will not follow each other in a document.

- **Add single pixel left border**

Normally, text is drawn starting at the leftmost pixel on the display to maximize screen space. This may cause the first character on some lines to be hard to read if using white text on a dark background. If this is the case, use this option to add a single pixel space to the beginning of all lines. **(New in 6.77).**

Chapter 10 – Editing Preferences



TealDoc **Editing Prefs** are available from a drop down menu on the Editing Screen. It supports the following options:

- **Scroll Buttons**
This setting changes how the up and down scroll buttons on the PalmPilot scroll a document being viewed by line, ¼ Page, ½ Page, ¾ Page, full page, or full page with a 1-line overlap.
- **Screen Taps**
This setting changes how tapping on the screen scrolls a document being viewed. It can scroll by line, ¼ Page, ½ Page, ¾ Page, a full page, a full page with a 1-line overlap, or do nothing at all.
- **Show Lines**
Determines whether text field on edit screen is drawn with underlines or on a blank bare background.
- **Auto Shift**
If selected, Graffiti text entry obeys PalmOS standard AutoShift rules, capitalizing text at the beginning of each sentence. Functionality for this feature may depend on the specific PalmOS version and Graffiti system in use.

Chapter 11 – Special Topics

Palm 5-Way Control

On newer PalmOS handhelds with 5-way direction pads, TealDoc supports pen-less navigation using the TICL pen-free navigation system. This system is similar to the 5-way controls on Treo 600 handhelds, but works with all model devices sporting a standard 5-way control.



This functionality and indeed all button mapping can be overridden using the TICL button mapping system, which allows you to map functions to standard hardware buttons or even program new custom buttons on your handheld for custom functionality.

See the Appendix for details on using both TICL pen-free navigation and the TICL button mapping system.

Full Screen Modes

TealDoc supports the virtual Graffiti “full screen” mode on most handhelds, including models from Palm, Samsung, Sony, and HandEra. As manufacturers have not yet standardized on a standard software interface for controlling their individual full screen modes, supporting new devices is ongoing process, and dependent on what information and support is available from each manufacturer.

Flash Rom Support

TealDoc supports read-only document files, such as those present in memory mapped Flash Rom. This includes files moved into unused operating system memory using programs such as FlashPro (by HandEra) or the Visor Springboard flash module. Other flash cards are not memory-mapped, but accessed as peripherals through Palm’s VFS mechanism and are supported by TealDoc’s VFS document system. Read-only files cannot have their bookmarks or details modified, and they may seek and scroll more slowly.

For best results, open a document first in normal memory before moving it into flash. This allows TealDoc to scan the document for any embedded bookmarks. As the interface for moving files to and from operating system flash is proprietary and not supported by PalmOS function calls, you’ll need to use third party utilities (like FlashPro or JackFlash) or utilities accompanying the hardware (for Springboard flash) to move files to and from this type of flash memory.

Upgrading from other browsers

TealDoc uses the standard PalmOS document file format commonly called “Doc”. If you are using another document browser, TealDoc will use the same files, but categories will not be consistent between the two programs, as the document file format stores document names separate from the documents themselves.

SPECIAL NOTE

If you have installed AportisDoc, do not delete that program while documents are in public format.

AportisDoc uses the same Palm Creator ID as the documents, which causes PalmOS to delete all your documents in memory if you don’t first change the documents to TealDoc’s “local” format.

To change files to be listed under TealDoc, chose **All to TealDoc format** to convert all document files currently loaded from the standard format to TealDoc's local format. When you do this, all the currently installed files will be marked as TealDoc files, and other browsers may not be able to read the files anymore. You can always convert them back using the **All to public format** menu choice.

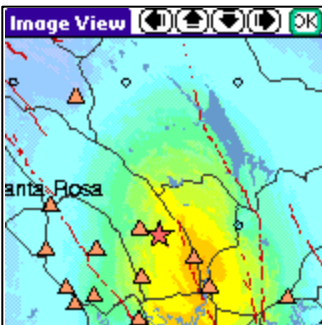
Similarly, you can use the **All to Private** and **All to Non-Private** menus to mark Doc-format files as private. When “private”, files will either be hidden or masked according to the global PalmOS private record state (more below). This menu has no effect with text files on external storage cards, as they don’t have the PalmOS file header needed to support private records. **(New in 6.81)**

You can also set the format and private property of individual files on an individual basis using the **Details** dialog accessible from the menu in an open doc.

Security

On the document browsing screen, and **Details** menu allows you to set whether the current document should be considered “secret” and thus subject to the current palm secret record setting. Under PalmOS 3.5 or higher, TealDoc adds an extra **Security** menu for accessing the Palm’s hidden and masked-record features. When the security state is set to “hidden”, private documents do not appear in the document list. When “masked”, private documents have their names blanked out.

Oversized Images



Some TealDoc documents contain images that, when tapped, link to an oversized image larger than the display screen. These documents open the **oversized image window** to display the image. On this screen, four screen buttons are present along the bottom of the document to scroll the display window around the larger image. You can also tap on the display area and drag it in a direction to pan around to another location as well.

Chapter 12 – Creating Document Files

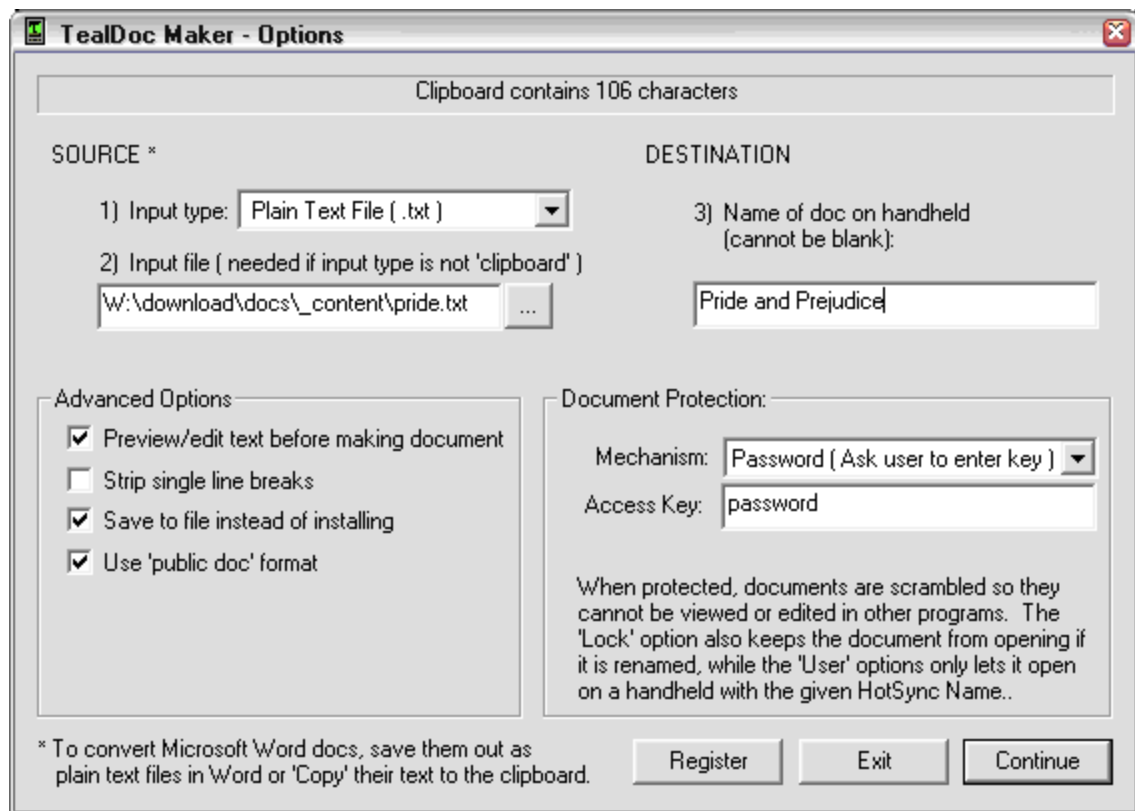
TealDoc can read files in either raw text or “Palm Doc” format. The latter is a standard format supported by many readers that compresses files to take less storage memory and supports advanced features such as bookmarks and notes. You may wish to create your own documents in “Palm Doc” format, particularly if you want to publish them for others to read.

In TealDoc

The easiest way to create “Palm Doc” files is within TealDoc itself. Simply open a text file for editing and use the “Save as” menu to save it in “Palm Doc” format. You can also create a new document and use the *Import* button to import a MemoPad memo into a new file in “Palm Doc” format.

In TealDoc Maker

You can also create Doc files on your desktop computer. Use **TDOCMAKE.EXE**, the TealDoc Maker program, to create your own TealDoc files from text or HTML files under Windows. Double-click on the TealDoc Maker icon to start the program.



Creating a Doc File

To convert a document, follow these steps:

Step 1) Select a Source Type

TealDoc Maker supports options for creating documents from a number of sources, including:

- **Text File**
A plain text file such as one created in Notepad or exported from Word as “plain text”
- **HTML File**
An HTML document or web page saved as a file in HTML format
- **New Blank Doc**
A new document you can edit paste text into (used with preview/edit option)
- **TealDoc Document**
An existing unprotected TealDoc or Doc file
- **Clipboard**
The current contents of the Windows text clipboard

The *text file* option is handy when converting documents already stored in text format or when converting from other formats, as most programs, such as Microsoft Word, support exporting of documents to plain text format. When this option is chosen, enter the location of the source file to convert in the *source file* field.

The *HTML* option strips HTML tags from the source text, and does some simple text-based formatting based on the original layout. Images, fonts, and styles are not converted, however, as these are not supported in standard doc files.

The *TealDoc* option, combined with the preview/edit text option, allows text previously converted to Doc format to be modified and saved into another document file.

The *clipboard* option is often the most convenient way of quickly creating a document file from text in another program. It uses the Windows cut and paste mechanism, allowing you to easily “cut,” say, copy a passage from an email or web page “paste” it into a new document. To use it, drag-select the text in the email program, web browser or other program and copy that text using the *Copy* (typically) item under that program’s *Edit* menu. Then run TealDoc Maker and select the “Clipboard” option.

Step 2) Select a Source File

If the source type above is anything but “Clipboard” or “Blank” use this field to select the text, html, or doc file to read as source text.

Step 3) Select a Palm Name

Select a name for the file as it will appear on the Palm and *Document List*. The name can be as long as 31 characters long

Step 4) Select Advanced Options

TealDoc Maker supports the following advanced options:

- **Preview/Edit Text** – Brings up a window containing the document to be created showing estimated formatting for the text. Text can also be saved in raw format to a separate file. If the document is less than 32k in size, the text can be edited here as well prior to completing the conversion. If larger, files can still be created, but you will not be able to make changes to the text in the preview screen.
- **Strip Single Line Breaks** – Removes line break characters from the text except when two or more consecutive line breaks are present. Use this option to reformat text which has been pre-formatted with long line breaks which would otherwise produce irregular formatting on the small Palm screen.
- **Save to file instead of installing** – Saves the completed .PDB file in a designated location but does not automatically install the file onto a handheld.
- **Use “Public Doc” format** – Codes the document with the standard doc Creator ID so other document readers can find it, and omits use of special TealDoc tags when converting HTML files.

Step 5) Selection Document Protection Options

TealDoc support four optional protection mechanisms for limiting use or distribution of created documents:

- **Password** – Asks the user for a specified password every time the document is opened
- **Register** – Asks the user for a password the first time the document is opened. The password is saved so this will not be necessary in the future if run on the same device. If moved to another device, this “registered” document will not open.
- **Lock** – Scrambles the text so that it cannot be read by other document readers (which occurs when any protection options is used), but does not require a password. This option also locks the document name, so that the file will not open if renamed.
- **User** – Keys the document to a specified HotSync User name, so that it will not open on a device with a different name.

Step 6) Start Conversion

Click on the “Continue” button to start compressing the document

Unmaking Doc Files

To convert unprotected document back to raw text format, use TealDoc Maker, selecting *TealDoc Doc* as the source format type and check the *Preview/Edit* option. Begin the conversion process, but use the **Save as Text** button to save out the decoded text in the document to a separate text file.

Third Party Utilities

A number of other excellent utilities by various authors exist for creating and transferring document files to standard Doc format supported by TealDoc. **MakeDoc** was the original DOS program created for this purpose. **MakeDocW** is an excellent Windows program which does the same thing but using an intuitive graphical interface with many options. These programs are available at many software archives or from our web site.

Converting Microsoft Word Docs

To create TealDoc files from formatted documents like Microsoft Word files, export the files as **plain text** before attempting to convert them, or use one of the third party Word macros which allow saving of Doc files directly from within Word. Visit the TealDoc information page at <http://www.tealpoint.com/softinfo.htm> for links to some of the available utilities.

Converting HTML Web Files



TealDoc Maker supports simple conversion of HTML files, performing simple text formatting based on HTML tags. To add images and other HTML-like formatting, TealDoc tags can be added. A reference of various HTML tags follows in the Appendix.

To convert other documents from the web, try TealAgent (www.tealpoint.com/softagnt.htm). TealAgent automatically downloads, converts, and installs news, weather, local movie times, and designated web pages to your handheld for viewing in TealDoc. Use TealAgent to keep your handheld up to date

with daily info in TealDoc format.

Chapter 13 – Imbedding Graphics/Links/Headers

Tag Overview

TealDoc supports imbedding of graphics into TealDoc documents, links to other places in the document, other documents, and even TealInfo folios. This is done by inserting special HTML-like tags into a text file before converting them into PalmPilot documents. See the Appendix for a full reference on TealDoc format tags.

When the **Support TealDoc Format Tags** option is set in TealDoc preferences, these tags insert graphics and link buttons into a document. The graphics scroll up and down with the document, allowing the insertion of charts, illustrations, and figures into the text, perfect for creating catalogs, price guides, and technical documents.

TealDoc tags appear like HTML as text within less-than and greater-than symbols. The text begins with the name of the tag, followed by optional parameters. Text parameters should be enclosed in quotation marks. To include quotations marks within text parameters, use two adjacent quotation marks (") for every desired quotation mark. Most of the time, tags should appear alone on a single line. This takes the format:

```
<TAGNAME PARAM1=VALUE PARAM2=VALUE>
```

Example:

```
<TEALPAINT SRC="Pictures" IMAGE=0>
```

Tag Placement

Normally, objects defined by tags are spaced out vertically on the screen. Occasionally, you may want to place tag objects side-by-side. To do this, place the tags next to each other with no spaces or between them.

By default, tag objects appear at the far left side of the screen with their top edge aligned with the line in which they are defined. Thus, in the above example, all your objects would appear on top of each other unless you explicitly move them. You can adjust the placement of graphic and link objects using the X and Y parameters to respectively move the tag from their default horizontal and vertical positions. X and Y must be positive values, moving the object to the right or down.

```
<LINK TEXT="Left" TAG="$A" X=20><LINK TEXT="Right" TAG="$B" X=40>
```

TRICK: you can fool the system into implementing a negative value for moving objects up or left by subtracting your offset from 65536. Thus, 65535 will shift the graphic by one pixel to the left. 65534 moves it two pixels.

A tag can follow text on line, but will always be placed at the far left edge unless it's manually shifted to another location. Any text following a tag, however, will always appear on a line below the tag object. Since the relative position of a tag definition in the line of text does not affect the tag object's placement, always place tags at the end of the line. To make text appear to the right of a tag object, insert the text before the tag definition, but leave space for where the tag object should go, and use the X parameter value to place the tag object in the correct location.

Appendix A – TealDoc Tag Reference

The following tags are currently recognized by TealDoc:

TEALPAINT

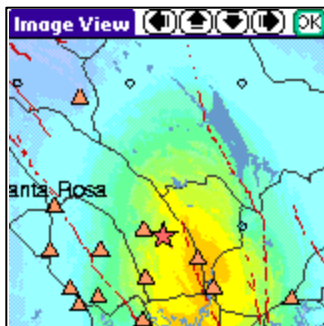


Inserts a TealPaint picture, or even a subrectangle of pixels from a picture. Using subrectangles, you can use memory efficiently by packing multiple graphic elements into single TealPaint image and extract each one to display in different parts of a document. Currently, for backwards compatibility, images always display in low resolution.

To create TealPaint pictures, use TealPaint or the Windows program **TealPoint Image Manager** that comes in the TealPaint zip file. For the images to appear properly, both the document file and image database must be loaded into the same device and folder.

The *SRC* parameter defines the name of the Image Database to use. This is the name of the file as it appears on the PalmPilot, (as in TealPaint) not necessarily the name of the file on the PC. It does not have a *PDB* file extension.

You define the sub-rectangle to grab using the parameters *SX*, *SY*, *WIDTH*, and *HEIGHT*. If you omit these, the whole source image will be grabbed. This will be placed into the document on the current line at the left edge, unless the *X* and *Y* parameters are used to offset the image to the right and downward.



TealPaint images can also be linked to another image larger than the screen in the same database by using the *LINK* tag. Typically, a small version of the full image is used as the main image. Tapping on the small image brings up the oversized image window so you can scroll around within the full sized picture. The larger image is specified as a *SUPERMAP* image, which can be created with TealPaint 6 or its associated TealPaint Image Manager.

Required Parameters:

- SRC
Name of the source image database containing the picture.

Optional Parameters:

- INDEX
Image number in the database of the image to use
- WIDTH
Width, in pixels, of the rectangle to grab (multiple of 8)
- HEIGHT
Height, in pixels, of the rectangle to grab
- DENSITY
Images are normally rendered in low resolution so documents can be compatible with older low-resolution handhelds. If this is not a requirement, you can specify DENSITY=2 to force images to draw in high (typically double) resolution. Note that the offsets, sizes and other values that you pass in the TEALPNT tag still refer to standard (low resolution) coordinates, so they will be double the actual pixel sizes. **(New in 6.77).**
- SX
Horizontal offset of sub-rectangle to grab (multiple of 8)
- SY
Vertical offset of sub-rectangle to grab
- X
Horizontal screen offset from left edge to place image (multiple of 8)
- Y
Vertical screen offset from current line to place image
- LINK
Links the image to another oversized image which is opened in the oversize image window when tapped. Values can be LINK=SUPERMAP
- SUPERINDEX
TealPaint Image Manager or TealPaint 6 can create oversized images, as well as shrink them down to screen size for the small “tappable” version.
- SUPERX,SUPERY,FULLX,FULLY
Specifies the initial offset in pixels from the upper left hand corner in which to open the oversized image window. For instance, SUPERX=0 and SUPERY=0 will specify that the window always opens looking at the upper left hand corner of the oversized image. If neither value is specified, then the initial scroll position will depend on where the initial small picture was tapped, which makes sense if the small picture is a small representation of the oversized picture.
- SUPERW, FULLW
Specify the full width of the oversized Supermap image.
- SUPERH, FULLH
Specify the full height of the oversized Supermap image.

Example:

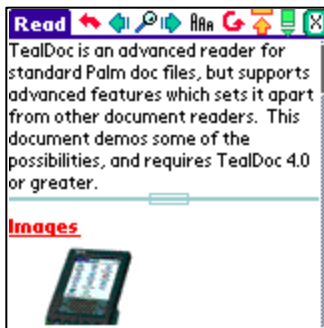
```
<TEALPAINT SRC="Pictures" INDEX=0>
```

```
<TEALPAINT SRC="Pictures" INDEX=0 LINK=SUPERMAP  
SUPERIMAGE=1 SUPERW=640 SUPERH=480>
```

Notes:

The “FULLVIEW”, “Image”, and “SUPERIMAGE” tags are associated with the older TealPaint 5 file format and are no longer supported or used.

HRULE



Inserts a horizontal line into the document

This is useful for dividing parts of a document in a way that works independently of the current font setting.

You can also use it creatively to draw anything you want, as long as all you want is a rectangle.

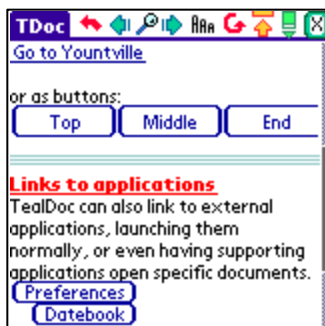
Optional Parameters:

- WIDTH
Width (length), in pixels, of the line (default 160)
- HEIGHT
Height (thickness), in pixels, of the line (default 2)
- X
Horizontal screen offset from left edge (default 0)
- Y
Vertical screen offset from top of current line (default 4)
- STYLE
"OUTLINE" or "SOLID" (default)

Example:

```
<HRULE STYLE=OUTLINE>
```

LINK



Inserts a link button into the document that can be pressed to jump elsewhere into the document--into another document--or to launch another application

You typically define a button by naming it using the TEXT parameter. Place a uniquely-named LABEL object (described below) elsewhere in the document where the LINK object will jump, and set the TAG parameter to the LABEL's name. If you wish to link to another document, the FILE parameter should also be defined to reference the name of the other document.

You can also link to the name of a TealInfo folio, if TealInfo is installed. Note that the parameter is case-sensitive, and must exactly match the name of the FILE as it appears on the PalmPilot.

The TAG used to mark a document must be unique from any text within the document, as a standard 'find' command is used to locate the tag after a link is selected. By default, this search begins at the top of a file and proceeds downwards. You can optimize the search by using the START parameter to start the search elsewhere in the document, and the DIR parameter to search backwards, if appropriate.

LINK tags can also be used to launch other applications. Depending on what the called application supports, it can optionally be told to open up a specific document, image, or media file, and return back to TealDoc when closed. The application is specified by its 4-letter Creator-ID and the APP tag. It's calling mode is determined by the MODE tag and FILE tags.

Optional Parameters:

- TEXT
Text to draw within the button (default 'link')
- FONT
Font 0 (normal), 1 (bold), or 2 (large) to use for the text
- WIDTH
Width (length), in pixels, of the line (default 160)
- HEIGHT
Height (thickness), in pixels, of the line (default 2)
- X
Horizontal screen offset from left edge (default 0)
- Y
Vertical screen offset from top of current line (default 4)
- FILE
Name of document, folio, image, database to jump to (default = current doc)
- TAG
Name of label to find

- **START**
Position in document from START=0 to START=100 percent to initially seek or CURRENT. If TAG is not specified, tapping on this link will just go to the specified percentage.
- **DIR**
Find direction: DIR=FORWARD (default) or DIR=REVERSE
- **STYLE**
Drawing style for the button. Either STYLE=BOX (default), STYLE=UNDERLINE, or STYLE=BARE.
- **APP**
Specifies the Creator-ID of the application to launch, if not a TealDoc document. For instance, APP="TIPT" will open TealPaint. If missing, TealDoc will call the application who is the registered owner of the specified FILE.
- **MODE**
Specifies how the external app will be called

MODE=NORMAL will just launch the app normally, and will work with all applications.

MODE=OPENDB will call the app with the SysCmdLaunchCmdOpenDB launch command, passing it the database specified by the FILE tag. Applications which support this launch command typically open the specified file for editing or playback.

MODE=GOTO usually has a similar effect, but uses the SysCmdLaunchCmdGoTo launch command instead, which works on many programs which support global find.

MODE=RETURN calls the app with the GOTO command as well, but places TealDoc's creator ID in the matchCustom field of the launch parameter block. TealPoint programs like TealPaint use this value to know to return to TealDoc when the passed image is closed.

Examples:

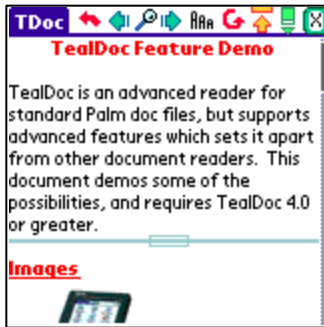
```
<LINK TEXT="Press Me" TAG="Contents" FILE="My Novels">
```

```
<LINK TEXT="AddressBook" APP="addr" MODE=NORMAL>
```

```
<LINK TEXT="Edit Picture" FILE="StatesIm" RECORD=0  
APP="TlPt" MODE=RETURN>
```

```
<LINK TEXT="PostalCalc" APP="TlIf"  
FILE="US Postal Calculator 2001" MODE=OPENDB>
```

HEADER



Adds a text header in the specified text and options. Text headers automatically text-wrap to fit in the current screen's width

This option is designed to be used to create topic headers with specified justification much like the HTML <H1>...etc tags. Note that when justifying, alignment is relative to the X coordinate, if specified. For instance, if right justification is used, the text is rendered so the right edge of the text lines up onto the X coordinate.

Optional Parameters:

- TEXT
Text to draw for the header. Text is automatically wrapped, and has a maximum length of 79 characters.
- FONT
Font 0 (normal), 1 (bold), or 2 (large) to use for the text
- X
Horizontal screen position
- Y
Vertical screen offset from top of current line (default 0)
- STYLE
"NORMAL" (default), "UNDERLINE", or "INVERT"
- ALIGN
"LEFT" (default), "RIGHT", or "CENTER"

Example:

```
<HEADER TEXT="Contents" ALIGN=CENTER STYLE=UNDERLINE>
```

BOOKMARK



Adds a bookmark at the current location when a bookmark auto-scan is performed

This option provides a way to insert invisible bookmarks in a file. It's similar to the standard method of inserting a marker at the end of the file, but both the marker and bookmark name are not normally visible in the file.

Optional Parameters:

- NAME
Name of the bookmark to add.

Example:

```
<BOOKMARK NAME="Contents" >
```

LABEL

Inserts nonprinting text into a document to be used as a target for a link.

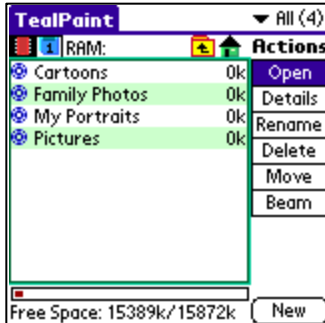
Required Parameters:

- NAME
Name of this label

Example:

```
<LABEL NAME="Contents">
```

Appendix B – TealPoint File List



File Lists

TealPoint standard File Lists are standard elements in new TealPoint applications. They provide a crucial building block missing from PalmOS, that of a consistent, standard interface for navigating device and folders and selecting individual files.

File lists display relevant files in a particular storage device, folder, and category, along with optional icons and typically additional information, such as the file size in kilobytes.

Navigation

Use the up and down scroll buttons to page through the list of items, and tap on a file to select or activate it. Typing a letter or writing it with Graffiti will seek the list to the next entry starting with that letter.

The Standard File List also supports navigation via device-specific controls, including:

Palm 5-way Control

Use the select button to highlight the top file in the list. Once an entry is highlighted, the scroll buttons can move the current selection up and down. A second press of the select button will activate (open) the selected file or folder.

Clie Jog Dial

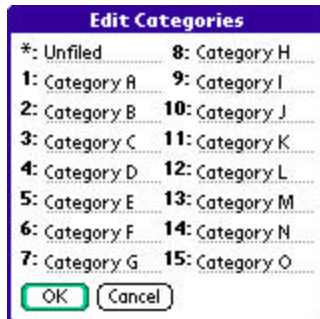
An inward *press* of the jog dial selects a file entry, while scrolling the jog dial *up* and *down* changes the highlighted entry. The jog *back* button, if present, moves up one folder in the directory structure if the current location is within a sub-folder. In the root of a device, or on a device, like RAM, which does not support folders, the *back* button acts normally, returning to the application launcher screen.

Accessory Keyboards

On a PC simulator or add-on accessory keyboard, the up, down, left, and right arrow keys function as Palm 5-way control buttons, while the *enter* key acts as *select*. The backspace key navigates to the parent folder.

Categories

Categories, if supported, allow manual sorting of individual files.



You can select or edit categories by tapping on the category selection button in the upper right hand corner of the screen. The count of items present in each category appears in parentheses next to each category name. Categories are supported for files present in both RAM and flash memory, and can be named from the *Categories* drop down menu.

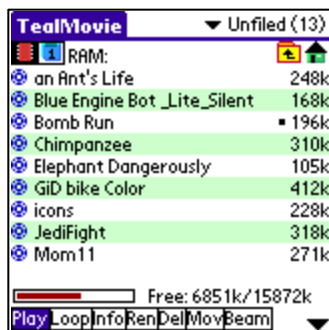
Flash Memory

Internal Flash

A dot indicator appears to the left of a file's name to indicate any files which are installed in ROM or PalmOS-formatted flash memory such as a Visor Flash module or unused operating system flash memory. Files in these internal locations are generally read-only and cannot be modified or moved into categories.

External Flash

External VFS (Virtual File System) flash card storage devices, such as Memory Stick, Compact Flash or SD/MMC cards are supported by the TealPoint File Lists if appropriate to the application.



When a VFS-compatible card is detected, an extra row of icons will appear along the top of the File List for navigating to folders on the external device. On the left are the device icons, used to select the current card or location to list files. The first icon is the memory icon, and is followed by a numbered card icon for every expansion card found.

Most devices will support at most one external storage card, and will thus only have one card icon. The Handera 330, however, can support two simultaneous data cards; so two card icons can be present if both slots are occupied, or if a device has more than one driver installed for a single card slot.

To show the files on an external card, simply tap on the corresponding card icon. External file devices support a hierarchical folder system, which are fully supported to help organize files.

If sub-folders are present in the current folder, simply tap on them to move “down” into the sub-folder to see its contents. To the right of the device icons is a display showing the current directory on the card, followed by two folder navigation buttons. Use the first *parent* icon to move up one level to the folder that contains the current folder. Tap on the rightmost *root* or *home* icon to move all the way back up to the topmost folder.

Appendix C – TealPoint File Manager



When a “Move” action is available in a TealPoint File List, the TealPoint standard File Manager provides a consistent interface for copying or moving files.

Moving/Copying Files

The TealPoint Standard File Manager allows you to copy or move the pre-selected file from one folder or device to another. The contents of a target location to receive the file appear in the lower half of the screen. Simply select the destination device and folder using the file list and device/navigation icons, and tap on the **Copy** or **Move** buttons to start. Files may be copied between RAM and external storage cards, or between folders on the same storage card. The target location must differ from where the source file already exists. Note that items in the list are not selectable, but are present to indicate contents which may already be present in the target location for the pre-selected file.

Note that operations are limited to what is supported by the installed hardware and system software.

Palm Memory

PalmOS memory does not support folders, and can normally only hold PalmOS-specific resource (.PRC) and database (.PDB) files. Desktop-specific files (such as .WAV, .TXT, etc.) can normally only be stored on external expansion cards, or if copied to RAM, are typically not recognized by applications.

MemPlug

The system software MemPlug expansion Springboard modules does not support the VFS-standard interface for moving of files between Cards and RAM, but third-party add-ons such as the Kopsis Engineering VFS library can add this capability.

Sony CLIE

Sony CLIE handhelds running older versions of the PalmOS system software (prior to PalmOS 4.0) do not support copying files to any folders outside the root standard “MSSONY” folder. Subfolders can be freely made and used within the MSSONY folder however.

An additional **Folder** button is present for creating and deleting folders. If the current target is on a device which supports folders, tap on it to either delete the current folder location (if it is empty) or create a new subfolder in the current target location.

Appendix D – TealPoint Button Manager

Description



Accessible from a “Buttons” menu options, the TealPoint standard Button Manager provides a powerful and flexible interface for customizing the hardware button and key mappings for TealPoint applications. Mappings can be individualized for different locations (screens) in the application, and mappings can be created to support new buttons, jog-dials, and directional pads on future devices.

Changing Default Mappings

To modify the mappings for a particular screen, first select the screen from the pick list of locations at the top of the screen. A list of mappable buttons/controls appears on the left. When an item is selected, its corresponding action is shown on the right. To change a mapping, simply select the new action when the key or button is highlighted.

Creating New Mappings



To create a mapping for a new key or button which is not listed, tap on the *New* button to bring up the custom code dialog. Press the button or control to be mapped, to capture the character its corresponding PalmOS key codes, and tap *OK* to create the key.

Note: Only keys which generate a standard PalmOS key code can be mapped. Some keys (like shift keys on some device keyboards) are handled in hardware and cannot be mapped.

Appendix E – TealPoint Pen-Free Navigation

TealPoint Pen-Free Navigation provides access to almost all programs screens and functions via keyboard or device 5-way rocker pad. Similar to the 5-way interface on the Treo 600, TICL pen-free navigation also adds similar functionality to older PalmOS handhelds with directional pads or devices with add-on keyboard peripherals.

Pad Navigation



With 5-way controls, a current button, checkbox, or text field control is highlighted in blue-green or drawn bolded in monochrome handhelds. The current control is changed by presses of the directional pad, which moves the selection to a control in the general direction of the button press. The center “select” button will activate the highlighted control, pressing buttons, toggling checkboxes, or turn on or off the cursor in a text entry field.

On some devices, like the Treo600, the direction pad is mapped in the operating system to move the cursor in an active text field.

When this is the case, the direction pad will move the cursor by default, but will change the active control selection once the cursor has reached the end of the text field and can move no further in that direction.

Keyboard Navigation

With an add-on keyboard, arrow keys replace the directional pad of a 5-way control. To select a control, the Enter key may be used, except when the text cursor is active in a multi-line text field. When this is true, the Enter key will enter a line break into the text field instead.

Accelerator Keys

On screens without text entry fields or other elements which accept keystroke input, buttons may also support an accelerator key which may be pressed to simulate a press of the key. When this is the case, the letter is shown underlined in the button.

Appendix F – Products

Visit us online for our complete product line, including:

TEALAGENT (<http://www.tealpoint.com/softagnt.htm>)

A PC-based Palm data converter, installer, and web clipper which formats local, network, and web-resident data into standard Palm formats.

TEALALIAS (<http://www.tealpoint.com/softalia.htm>)

Making the most of expansion memory, TealAlias creates placeholder alias files that automatically find, load, and launch apps and data from external SD cards, freeing precious main memory.

TEALAUTO (<http://www.tealpoint.com/softauto.htm>)

The complete automobile mileage, service, and expense tracking program, TealAuto, supports unmatched features and customization options.

TEALBACKUP (<http://www.tealpoint.com/softback.htm>)

Backup your valuable data with TealBackup, supporting manual and automatic backups to SD/MMC/CF cards and Memory Stick, backups through HotSync, and optional compression and encryption.

TEALDOC (<http://www.tealpoint.com/softdoc.htm>)

Powerful reader for Palm documents, e-books, and newspapers, supporting advanced features such as pictures, links, and flash cards.

TEALECHO (<http://www.tealpoint.com/softecho.htm>)

Digital "ink" lets you see what you write, vastly increasing graffiti writing speed and accuracy. No more writing blind!

TEALGLANCE (<http://www.tealpoint.com/softglnc.htm>)

Pop-up utility shows time, date, appointments and to-dos, and other useful information at power-up. See your day at a glance.

TEALINFO (<http://www.tealpoint.com/softinfo.htm>)

A system for creating and displaying interactive databases, reference works, and mini-application folios; a handheld reference library.

TEALLAUNCH (<http://www.tealpoint.com/softlnch.htm>)

A pop-up application launcher and mapping utility for launching apps and special functions from pen taps, graffiti strokes, or button presses.

TEALLOCK (<http://www.tealpoint.com/softlock.htm>)

Secure automatic locking program with optional data encryption and numerous activation and customization options.

TEALMAGNIFY (<http://www.tealpoint.com/softlens.htm>)

An ever-ready magnifying glass that works with most any program, TealMagnify saves your eyes when looking at tiny text.

TEALMASTER (<http://www.tealpoint.com/softmstr.htm>)

A supercharged Hackmaster replacement with 100%-compatibility and enhanced stability, configuration, diagnostic and activation features.

TEALMEAL (<http://www.tealpoint.com/softmeal.htm>)

A personal restaurant database and selection wizard. Keep a database of your favorites and easily find them by type or category.

TEALMEMBRAIN (<http://www.tealpoint.com/softmemb.htm>)

Memory monitor and stack manager which helps identify conflicts and greatly improves stability running multiple hacks and drivers.

TEALMOVER (<http://www.tealpoint.com/softmovr.htm>)

File management utility for beaming, deleting, renaming, and copying files both in memory and on VFS-compatible storage cards.

TEALMOVIE (<http://www.tealpoint.com/softmovi.htm>)

High-quality multimedia system with video and synchronized sound. Includes audio/video player and Windows AVI converter program.

TEALNOTES (<http://www.tealpoint.com/softnote.htm>)

Insert freehand graphic "Sticky Notes" into memos, to-do lists, address book entries--almost anywhere you currently have editable text.

TEALPAINT (<http://www.tealpoint.com/softpnt.htm>)

The most powerful paint and sketch app on Palm OS handhelds, featuring 16 tools, 16 patterns, 12 brushes, color, and desktop image conversion.

TEALPHONE (<http://www.tealpoint.com/softphon.htm>)

A powerful Address Book replacement with superior interface, display, search, and indexing options.

TEALPRINT (<http://www.tealpoint.com/softprnt.htm>)

The all-in-one text and graphic printing solution for Palm OS, supporting infrared, serial, and HotSync printing to any Windows printer.

TEALSAFE (<http://www.tealpoint.com/softsafe.htm>)

A personal encrypted data vault and wallet for computer passwords, credit card numbers, calling cards, software registration codes, PIN numbers, bank accounts, business contacts, journal entries, or any other sensitive information. A must for features and security.

TEALSCRIPT (<http://www.tealpoint.com/softscrp.htm>)

An improved, tuneable, Graffiti text recognition system that lets you modify the handwriting recognition to suit your handwriting.

TEALTOOLS (<http://www.tealpoint.com/softtool.htm>)

Six pop-up desk accessories, including a calculator, clock/stopwatch, preferences panel, editing panel, memopad, and a file/backup manager.

Appendix G – Revision History

Version 6.88 - December 18, 2007

- Fixed 'find-first' function to find text on first line of document
- Fixed 'Add single pixel left border' option to fill pixels to use page color when using dark color theme

Version 6.87 - September 17, 2007

- Added ability to append document or text file to open document in editor
- Added new 'find first' option on find screen
- Added new font selector window with integrated FontBucket support
- Added new improved icon images for file dialogs
- Added support for hires button icons on Sony CLIE handhelds
- Fixed event queue crash on Treo 680 when doing "replace all" on largeish document
- Fixed dragging of enlarged superbitmap images using pen to pan correctly
- Fixed updating of imbedded modification dates of card-based doc files

Version 6.83 - April 25, 2007

- Fixed main screen to redraw properly after entering registration key (would leave image of previous window open in 6.82)

Version 6.82 - April 21, 2007

- Fixed intermittent crashes exiting app from 6.81 due to changes in external code library

Version 6.81 – April 13, 2007

- Added new 'All to Private' and 'All to Non-Private' menus
- Updated TealDocMaker to convert most common amp-semi tags when converting HTML files

Version 6.80 – April 2, 2007

- Fixed document printing from clipping end of document

Version 6.78 – January 23, 2007

- Fixed refreshing of doc list screen after closing document forced in 16-bit mode

Version 6.77 – January 3, 2007

- Added ability to import memos into doc or text file (new 'Import' button on 'New Document' screen)
- Added ability to specify high resolution images in IMAGE tags (add DENSITY=2 to TEALPNT tag)
- Added option to list/sort documents by modification date (in 'List Prefs')
- Added option to add 1-pixel left border in reading screen (in new 'Advanced Prefs' screen)
- Added option to force 16-bit mode on reading screen (In 'Reading Color Prefs')
- Added option to list/open card files with no file extension ('Show files with no extension' in 'Plain Text File Types' Screen)
- Added menu item to add note to reading screen (previously only available from bookmark icon)
- Added document name in doc 'Details' screen
- Improved UI drawing routines to eliminate extra drawing steps for faster screen updates
- Improved document list to automatically scroll to last open document when returning to program
- Improved document memo export to send directly to new Palm memo database for better compatibility
- Improved menu selection to wait for button release for better device compatibility
- Improved menu button handling to reject double-selecting if 5-way button is held too long
- Improved pick list handling to reject double-selecting if 5-way button is held too long
- Removed sound "tick" when scrolling menu to prevent double-tick sound on devices where 5-way already make noise
- Fixed missing scrolling arrows to document note screen
- Fixed long document export when spanning multiple memos
- Fixed password request screen to start out blank (previously contain device Flash ID, if any)

Version 6.70 - November 10, 2005

- Added ability to send (not just beam) docs via Bluetooth/SMS (on supported systems)
- Added new feature 'Export to Memopad' as menu item on editing screen
- Added option to hide file extensions on registered custom text file types (in *Text File Types* menu)
- Added Reading Preferences option to lookup word on tap
- Added word/sentence/character count menu to editing screen
- Fixed funky text leading when using tiny font on edit screen on some devices

- Fixed incompatibility with z22
- Fixed TealDocMaker to add spaces between lines if stripping carriage returns
- Fixed extra padding characters from being added to documents when editing them

Version 6.64 – March 11, 2005

- Added edit menus and graffiti indicators to screens with text fields
- Added detail screen support for text-format documents
- Added file size and modification date to details screen
- Fixed display of 'half-sized' text on Sony handhelds
- Fixed 'select word' tapping mode to recognize international characters

Version 6.63 - February 21, 2005

- Fixed crashing when using tiny monospaced font on older (OS3.5) devices
- Added compatibility to checkbox controls with 'midnight' dark color themes

Version 6.62 - January 29, 2005

- Added high resolution version of tiny monospaced font
- Updated 5-way navigation order mappings on various screens to match new UI guidelines
- Fixed automatic activation of text fields on popup dialogs (e.g. reg key entry screen)
- Fixed active control highlighting on Tungsten T5 in landscape mode
- Fixed custom drawing routines for Tungsten T5 left-handed landscape mode

Version 6.61 - December 1, 2004

- Added option to specify preferred doc folder for external storage cards
- Fixed All-to-TealDoc and All-to-Public from messing up RAM-based text files
- Fixed text files edited in RAM to truncate properly if shortened

Version 6.60 - November 17, 2004

- Fixed pick list from resizing display on Tungsten T5

Version 6.59 - November 16, 2004

- Added compatibility with Tungsten T5 full screen mode

Version 6.58 - November 5, 2004

- Added auto fill of find dialog with current highlighted text, if any
- Added option to hide category counts in document list
- Added options to show empty categories in document list
- Added option to turn on 'AutoCaps' mode on Edit Screen
- Fixed bug allowing scrolling past end of short documents
- Fixed crash if scanning files with mangled or oversized bookmark tags
- Fixed pick list selection on Tungsten T5
- Fixed text undo buffer from being invalidated by manual menu selection

Appendix H – Contact Info

TealDoc by TealPoint Software
©1998-2007 All Rights Reserved.

TealPoint Software
TealDoc for PalmOS
454 Las Gallinas Ave #318
San Rafael, CA 94903-3618
We look forward to hearing from you.

Please visit us at www.tealpoint.com, or email us at support@tealpoint.com.

Appendix I – Registering

Registering allows you to use the program past the 30 day expiration period and turns off registration reminders.

Currently, you may register by snail mail or online with a credit card and a secured server from the store where you downloaded the software. For the first option, send the following information on a sheet of paper separate from your payment.

- Product Name
- E-Mail Address
- HotSync User ID (Pilot Name Required for Passkey generation. It can be found on the main screen of the HotSync application on the Pilot as "Welcome _____" or in the corner on a PalmIII or higher)
- Check (drawn off a US Bank) or Money Order for (\$19.95 US). No international checks or money orders please.

Appendix J – Legal Notice

We at TealPoint Software are committed to providing quality, easy-to-use software. However, this product is provided without warranty and the user accepts full responsibility for any damages, consequential or otherwise, resulting from its use.

This archive is freely redistributable, provided it is made available only in its complete, unmodified form with no additional files and for noncommercial purposes only. Any other use must have prior written authorization from TealPoint Software.

Unauthorized commercial use includes, but is not limited to:

- A product for sale.
- Accompanying a product for sale.
- Accompanying a magazine, book or other publication for sale.
- Distribution with "Media", "Copying" or other incidental costs.
- Available for download with access or download fees.

This program may be used on a trial basis for 30 days. The program will continue to function afterwards. However, if after this time you wish to continue using it, please register with us for the nominal fee listed in the program.

CUSTOMER LICENSE AGREEMENT

YOU ARE ABOUT TO DOWNLOAD, INSTALL, OPEN OR USE PROPRIETARY SOFTWARE OWNED BY TEALPOINT SOFTWARE, INC. CAREFULLY READ THE TERMS AND CONDITIONS OF THIS END USER LICENSE BEFORE DOING SO, AND CLICK BELOW THAT YOU ACCEPT THESE TERMS.

1. License. You are authorized to use the Software Product owned and developed by TealPoint Software, Inc. on a single hand-held computing device on a trial basis for thirty (30) days. If after 30 days you wish to continue using it, you are required to register with TealPoint and pay the specified fee. This license is not exclusive and may not be transferred. You may make one copy of the Software for back-up and archival purposes only.
2. Ownership. You acknowledge that the Software Product is the exclusive property of TealPoint Software, Inc, which owns all copyright, trade secret, patent and other proprietary rights in the Software Product.
3. Restrictions. You may NOT: (a) decompile or reverse engineer the Software Product; (b) copy (except as provided in 1 above) sell, distribute or commercially exploit the Software product; or (c) transfer, assign or sublicense this license.
4. Disclaimer of Warranty and Liability. TEALPOINT MAKES NO WARRANTY, EXPRESS OR IMPLIED, AS TO THE ACCURACY, COMPLETENESS OR FUNCTIONING OF THE LICENSED SOFTWARE, INCLUDING WITHOUT LIMITATION, WARRANTIES OF MERCHANTABILITY OR OF FITNESS FOR A PARTICULAR PURPOSE, ALL OF WHICH TEALPOINT DISCLAIMS. ALL LIABILITY IS DISCLAIMED AND TEALPOINT ASSUMES NO RESPONSIBILITY OR LIABILITY FOR LOSS OR DAMAGES OF ANY KIND, DIRECT OR INDIRECT, INCIDENTAL, CONSEQUENTIAL OR SPECIAL, ARISING OUT OF YOUR USE OF THE LICENSED SOFTWARE, EVEN IF ADVISED OF THE POSSIBILITY THEREOF.
5. Termination. You may terminate this Agreement at any time by destroying your copy(ies) of the Software Product. The Agreement will also terminate if you do not comply with any of its terms and conditions, at which time you are required to destroy your copy(ies) of the Software Product and cease all use.
6. Applicable Law. This Agreement is governed by the laws of the State of California.